

Queensland Spatial Information Council
smart spatial solutions for Queensland

CC Tech Summit

Government Information Licensing Framework -
a multidisciplinary project improving access to
Public Sector Information

Date 12 December 2008



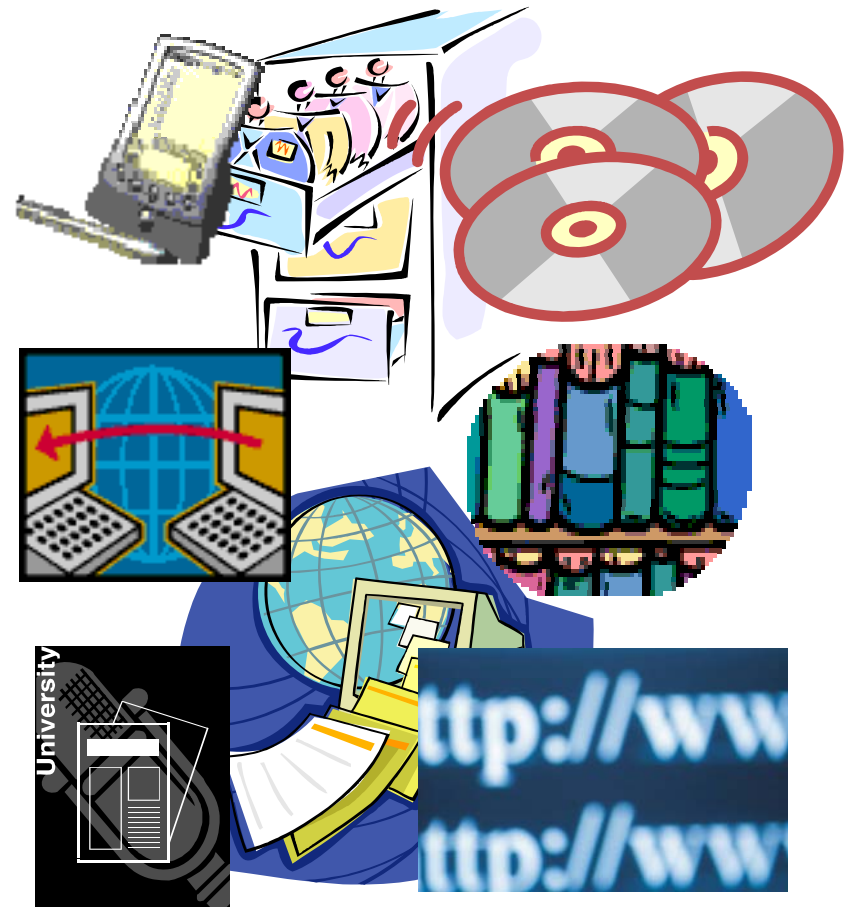


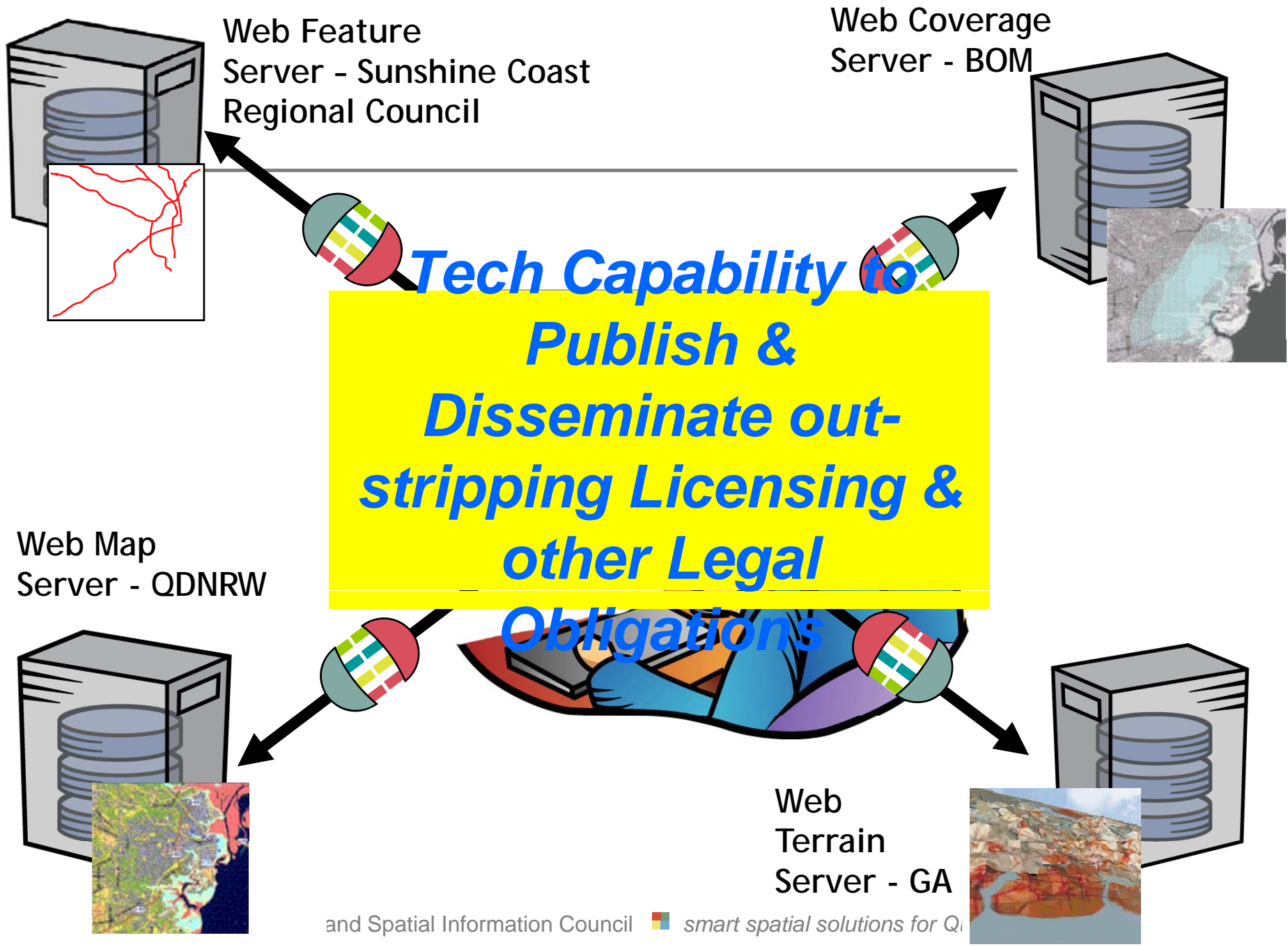
GILF Project Participants

- Funding Cooperative Research Centre for Spatial Information
- Queensland Government - Economic and Policy
- Queensland University of Technology - Legal & Policy
- Australian Bureau of Statistics - Technical
- Landgate Corporation - Spatial Implementation –
- Acknowledge the work of colleagues but views expressed here are not necessarily those of any of these organisations.
- Split between research and Government Implementation

What types of information does government hold?

- Reports, bulletins, briefs
- Statistical or factual profiles, data tables
- Technical reports
- Research
- Maps
- Satellite imagery
- Property boundaries
- Images
- Web pages
- Recordings (audio, video)
- Administrative Collections






Government Service Channel Delivery Demands Clearer and Simpler Management of Rights of Access and Sharing

The collage features several overlapping screenshots of web-based GIS applications:

- HazardMaps.gov:** A web portal for the Multi-Hazard Mapping Initiative (MMI) with a search form and a map of Europe.
- Queensland Government:** An interactive mapping tool for Queensland with a legend and search options.
- Information Queensland:** A map interface with a search bar and a legend.
- Other Maps:** Various other map views showing different data layers and search results.

Content	Data Source
Elevation Model	CTI-ON
Provincial Boundaries	CTI-ON
Ecotones	Environment Canada - Quebec
Protected Areas	NS
	PEI
	NB
	QC
	ON
	MB
	AB
BC	Parks Canada





AIM of GILF Implementation Project

- Deliver a standard set of terms and conditions for information licensing.
- That will work effectively and legally in practice.
- But must fit within a national and internationally recognised environment.



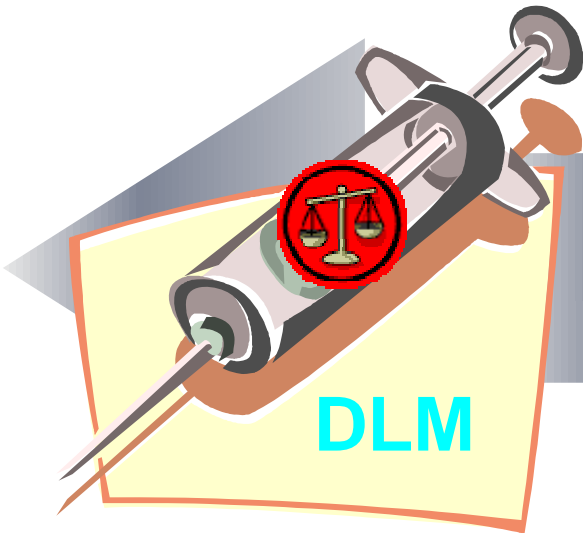
Why Government needs to License

- Australian Governments have copyright on works
- Copyright in Australia extends to works with relatively small creative components such as databases eg white pages directory.
- This has some positive impact in that Government must be attributed, but it raises the need for a clear licensing model



GILF Components

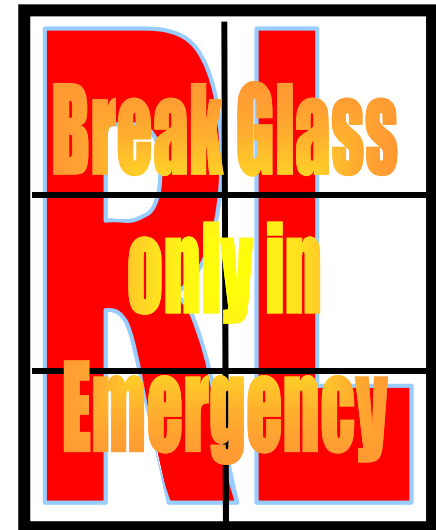
© creative commons **RL**

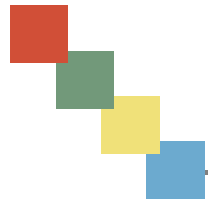




Restrictive Licence (RL)


- Many public sector transactions involve information that can only be used in a restricted way
 - Personal and confidential information
 - Legislative and statutory restrictions
 - Security and Commercial in Confidence
- Restrictive Licence
 - Based on copyright and contract law





Surface Water Database

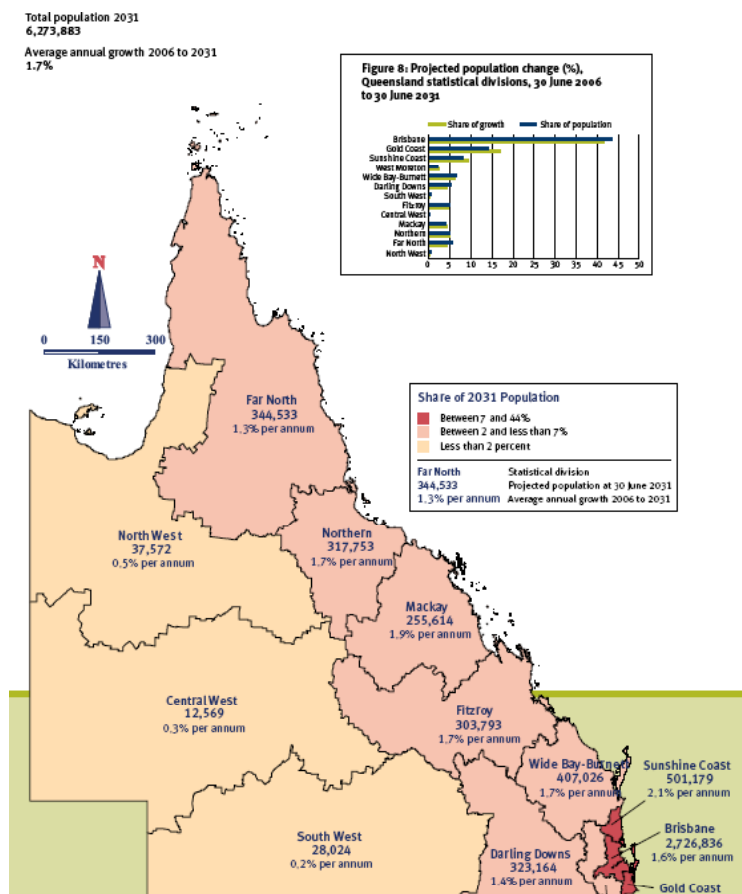
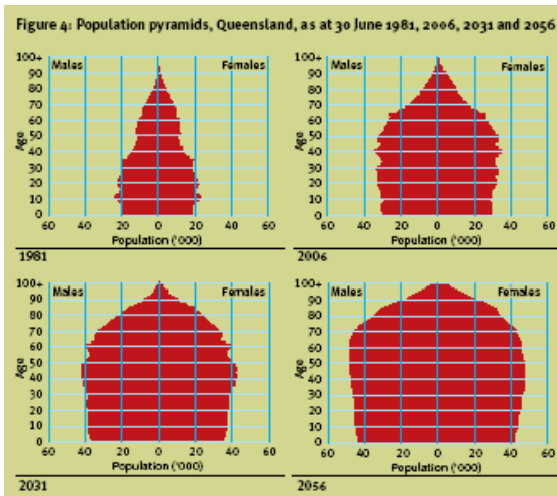


- Australia Yellow Waters Billabong by [Pedro Lopez](#) 



Population projections 2006-2056 Queensland and Statistical Divisions

- Queensland 1/5 of the area of the USA
- 65% of the 4 million population live in the SE
- We have an aging population



Aboriginal and Torres Strait Islander Queenslanders (Census 2006 Bulletin no. 4)

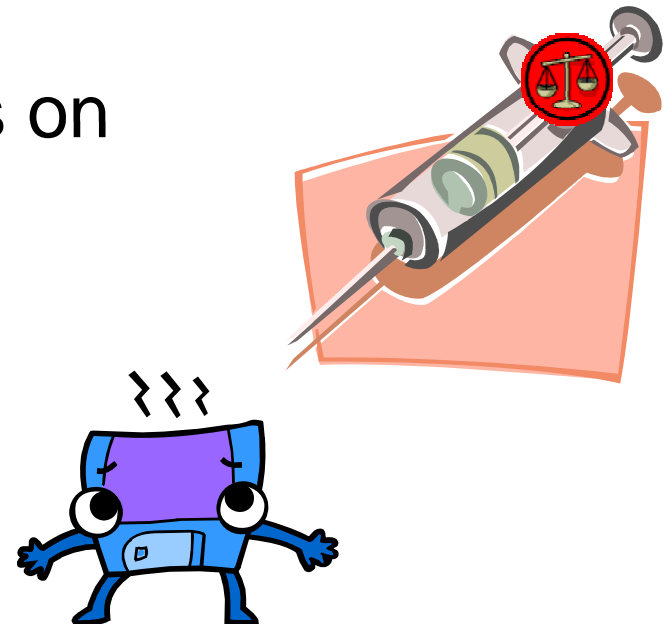


Aurukun indigenous community, Copyright Google Maps



Digital Licence Management

- The primary purpose of the DLM is to embed license metadata
- Also does visible markings on some file formats
- Developed in Java
- Australian Bureau of Statistics are leading development
- Why the name?





Benefits of Digital Licence Management

- Easy link from data to licence
- Find information based on its license
 - Eg: free to use or share
- Clear licence branding on data



More Software??

- When DLM was started a suitable alternative was unavailable for the technical environment
- Liblicense is a current alternative. We will work with Creative Commons to determine the fit
- Initial discussions see a role for DLM in Java environment



DLM Design

- The software has been designed for extensibility and integration
- New licenses can be added
- New file formats supported as injectors
- Basic API which can be called from other applications such as CMS



Current Functionality

- Supported file types for metadata injection and visible elements
 - PDF
 - HTML
 - XML
 - MS Office 2002
 - JPG



Future Functionality

- Resolve some design issues
 - Eg Licenses in XML same approach as liblicense
- Support for web services specifically spatial
 - Standards based approach
- Support for additional file types eg images & GML
- Investigate additional metadata fields eg Dublin Core
- Get the application in a collaborative environment

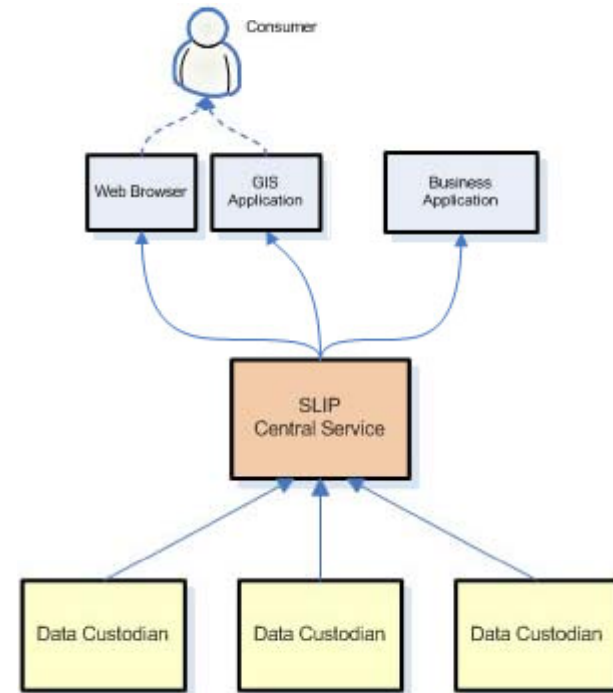


Planned implementations

- Office of Economic and Statistical Research
 - Integration with the Electronic Document Records Management System and Content Management System
 - Extract metadata from attachments and store in CMS
 - Inject metadata into attachments
 - Inclusion of HTML CC License and optionally RDFa

Planned implementation

- Western Australian Shared Land Information Platform (SLIP)
- 23 Agencies
- 350 datasets
 - Roads
 - Land boundaries
 - Geology
 - Agriculture
- Need clear licence metadata





SLIP

- Information delivered via Open GIS Consortium format WebMap & WebFeature Services
- Need to amend standards to support insertion of license metadata into the services and or outputs





What's after licensing

- Metadata catalogues!
- We're looking for an approach where:
 - Agencies are responsible – manage with metadata
 - Information is broadly discoverable through web search engines
 - The catalogues can participate in specific metadata networks




Information Discovery

- Current approach in government is mixed:
 - Registers of metadata – deep web
 - Unstructured descriptions on web pages – good for web search
 - Investigating an alternative approach using RDFa



DataList example

 [Home](#) | [Site map](#) | [Contact](#)
Queensland

Office of Economic and Statistical Research **Metadata pilot site**

[Home](#) | [Metadata examples](#) | [Search](#)

Site Overview

This site is a pilot metadata site for the Office of Economic and Statistical Research (OESR). It's been setup to experiment with the new RDFa metadata tagging standard.

The live metadata system is available on the [OESR Metadata search page](#).

[Home](#) > [Metadata examples](#)

Births Data, Queensland

Description	Demographic unit record data on births registered in Queensland
Custodian	OESR - Queensland Treasury
Rights	Restricted - Unit record data can not be released without the Government Statisticians approval. Data that can identify an individual should not be released
Source	Australian Bureau of Statistics
Mandate	
Subject	Demography
Geographic Coverage	State Statistical Local Area Local Government Area
Time Period Covered by Data	Start Date: 01/01/1989 End Date: -
Dataset Creation Date	01/01/1989
Contact Details	Publisher: Queensland Treasury Position: Assistant Statistician , Office of Economic and Statistical Research Phone: +61 7 3405 0332 Fax: +61 7 3234 0755 Address: PO Box 15037, City East 4002 State: Queensland Email: data.register@treasury.qld.gov.au





Structured content

- `<rdf:Description rdf:about="http://datalist.oesr.qld.gov.au/metadata-examples/births.shtml">`
 - `<ns0:title>Births Data, Queensland</ns0:title>`
 - `</rdf:Description>`
- `<rdf:Description rdf:about="http://datalist.oesr.qld.gov.au/metadata-examples/births.shtml">`
 - `<ns0:description>`
 - Demographic unit record data on births registered in Queensland
 - `</ns0:description>`
 - `</rdf:Description>`
- `<rdf:Description rdf:about="http://datalist.oesr.qld.gov.au/metadata-examples/births.shtml">`
 - `<ns0:creator>OESR - Queensland Treasury</ns0:creator>`
 - `</rdf:Description>`
- `<rdf:Description rdf:about="http://datalist.oesr.qld.gov.au/metadata-examples/births.shtml">`
 - `<ns0:rights>`
 - Restricted - Unit record data can not be released without the Government Statisticians approval.
 - `</ns0:rights>`
 - `</rdf:Description>`
- `<rdf:Description rdf:about="http://datalist.oesr.qld.gov.au/metadata-examples/births.shtml">`
 - `<ns0:source>Australian Bureau of Statistics</ns0:source>`
 - `</rdf:Description>`



Structured for Google

[DataList - Births Data](#)  

Births Data, Queensland. Description. Demographic unit record data on **births** registered in Queensland. Custodian. OESR - Queensland Treasury. Rights ...

datalist.oesr.qld.gov.au/metadata-examples/births.shtml - 9k - [Cached](#) - [Similar pages](#) - 

- Use of heading tags eg <H1>
- Description metadata tag rather than dc.description
- Sitemaps



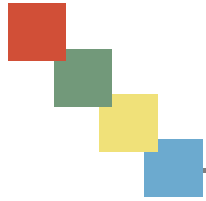
Structured for Search Monkey

- Include RDFa Dublin Core and Australian Government Locator Service
- Search result is more appealing and useful
- Does not improve discoverability at this stage



Summary

- The purpose of the GILF project is to improve access to Government Information
- The information is not that different to private sector and research data
- We would like to collaborate.



Discover more about QSIC at
www.qsic.qld.gov.au

Email: qsio@treasury.qld.gov.au

Phone: (07) 3235 9010

